

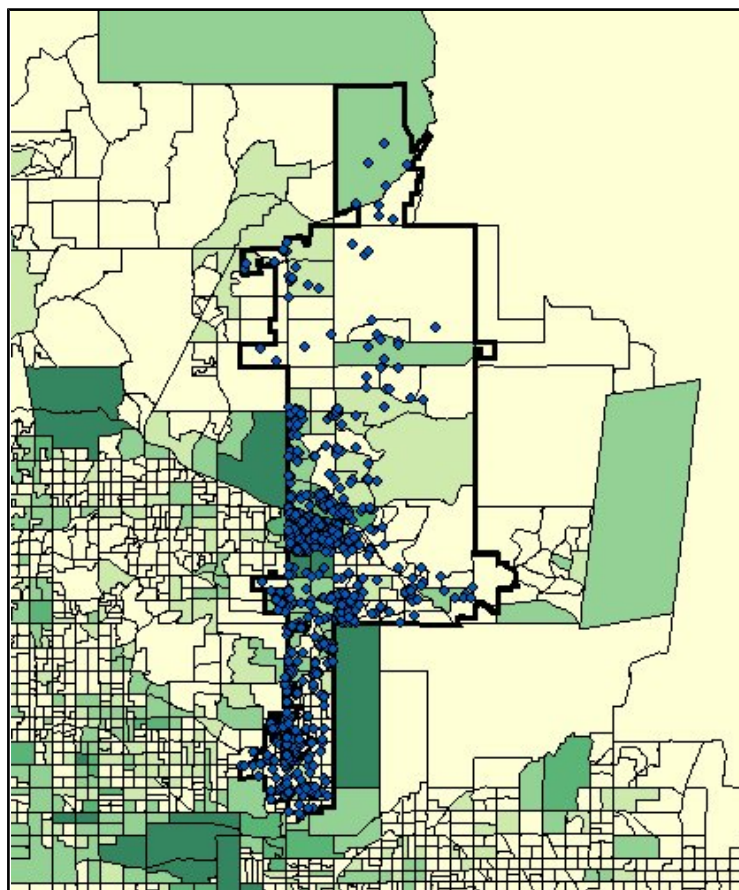
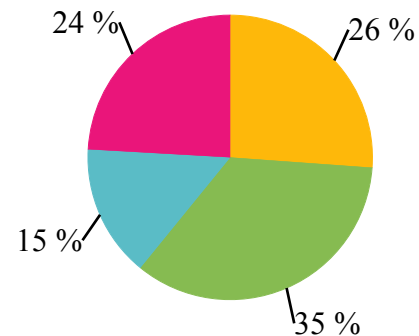
Scottsdale

2016 Employment Report

The has **6,370 businesses** with 5 or more employees constituting **156,690 jobs**. This is 9.5% of jobs throughout the MPO region.

| Employer Size | Number of Businesses | Total Jobs |
|-----------------|----------------------|------------|
| 5 to 19 jobs | 4,730 | 40,970 |
| 20 to 99 jobs | 1,420 | 54,420 |
| 100 to 249 jobs | 170 | 23,550 |
| 250+ jobs | 60 | 37,760 |

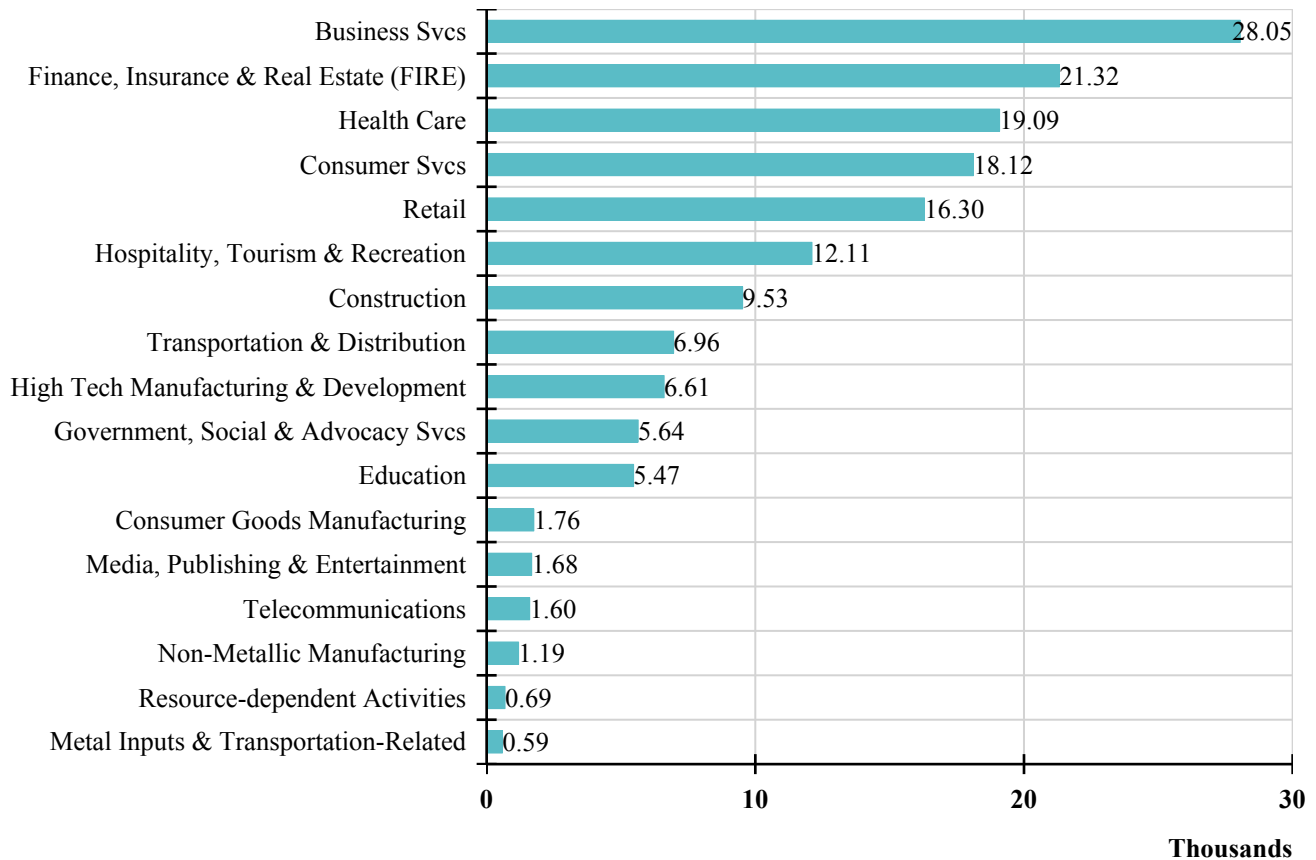
Jobs by Size



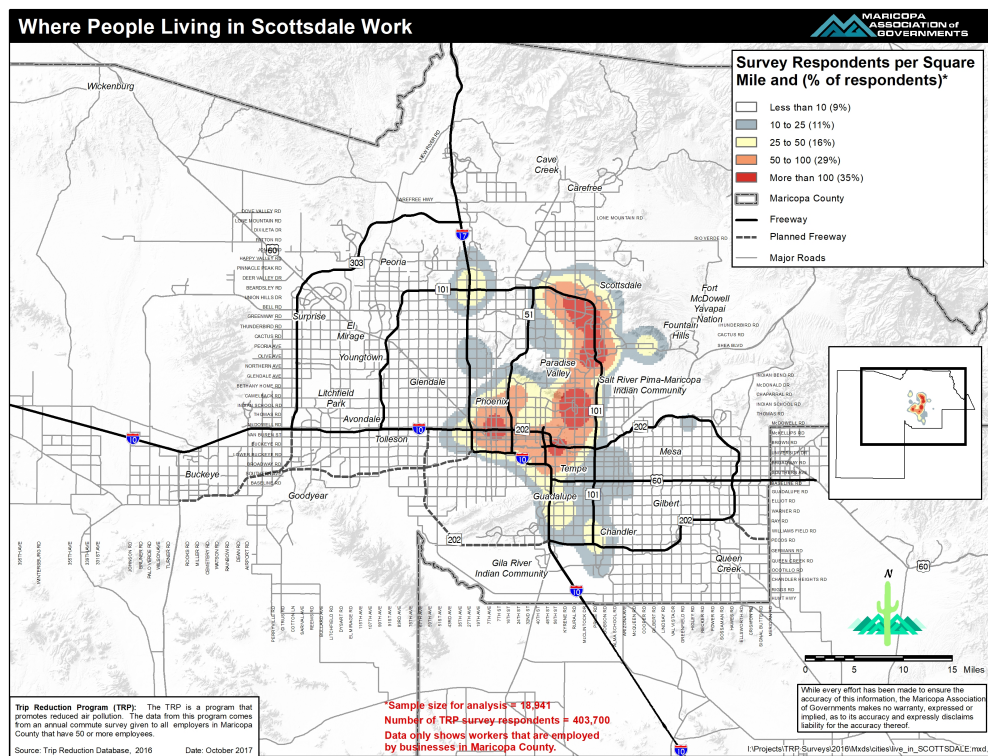
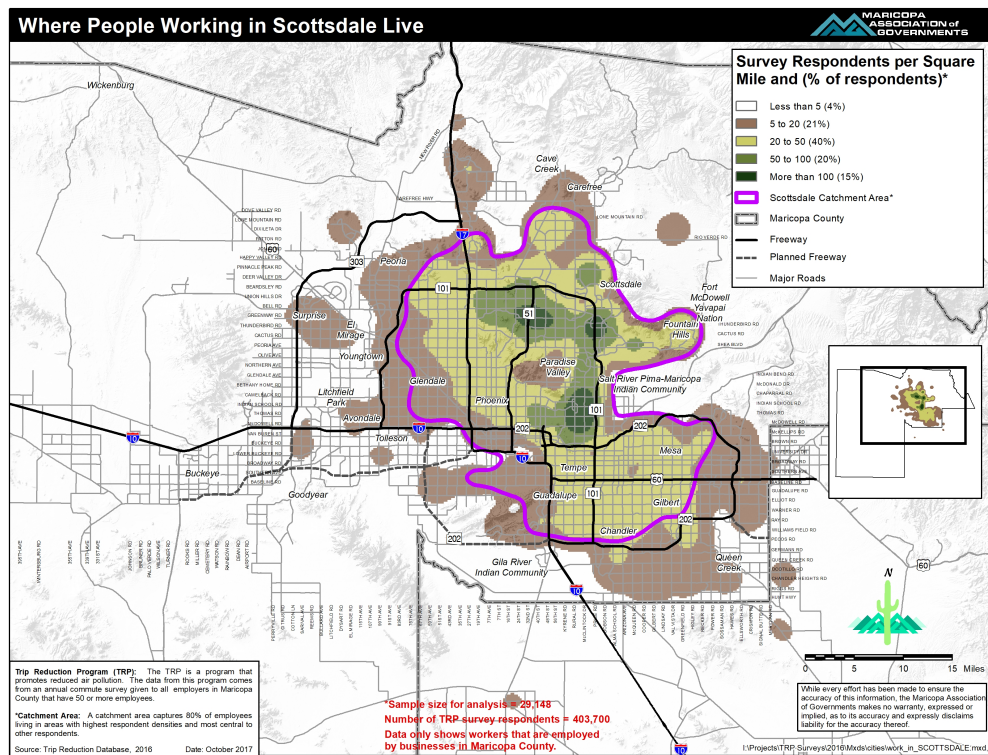
| Top 10 Employers | Jobs |
|-----------------------------------|-------|
| Honorhealth | 4,790 |
| Cvs Pharmacy Inc | 3,920 |
| Vanguard | 3,080 |
| General Dynamics C4 Systems Inc | 3,000 |
| City Of Scottsdale | 2,650 |
| Mayo Clinic | 2,000 |
| Scottsdale Unified School Dist 48 | 1,890 |
| Nationwide Insurance | 1,580 |
| Quicken Loans | 1,400 |
| Yelpcom | 1,400 |

2016 Employment Report: Industry Clusters

Scottsdale Jobs by Industry Cluster



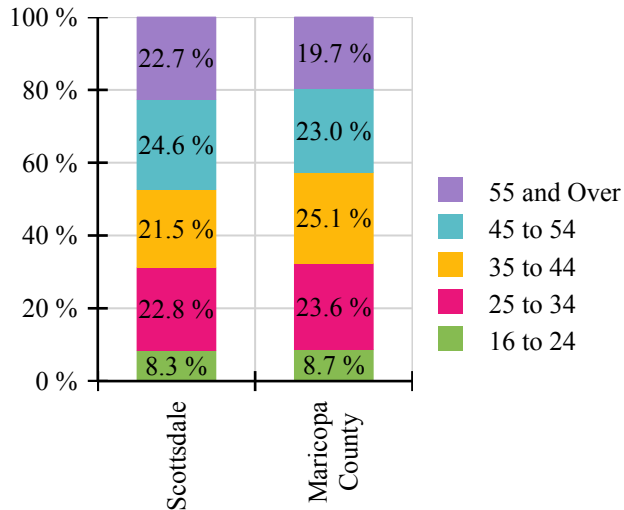
2016 Employment Report: Live-Work Patterns



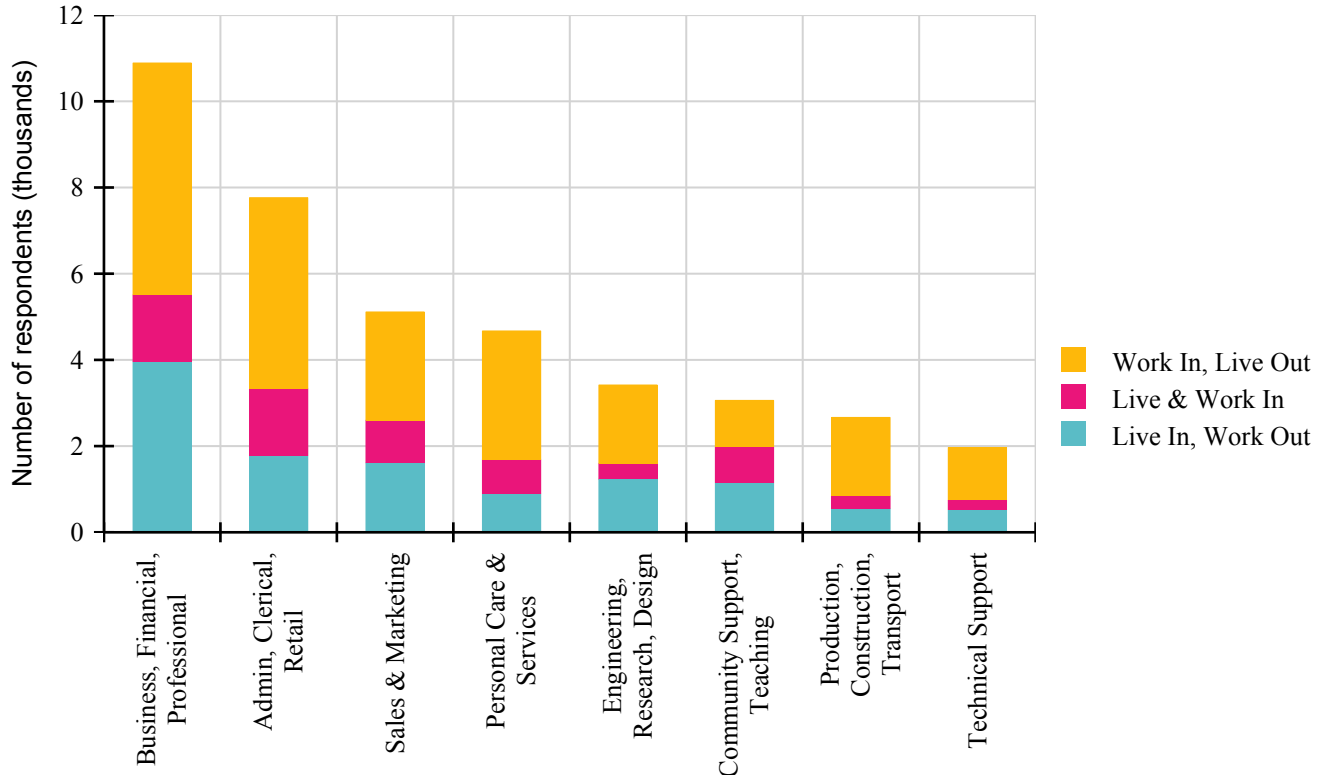
Sources: 2016 MAG Employer and Job Centers Database (Includes businesses with 5 or more employees)
2016 Maricopa County TRP Survey (Includes businesses in Maricopa County with 50 or more employees)
Numbers above 10 are rounded to the nearest 10

2016 Employment Report: Worker Characteristics

Worker Age Range: Scottsdale and County



Scottsdale Resident and Worker Occupation Mix

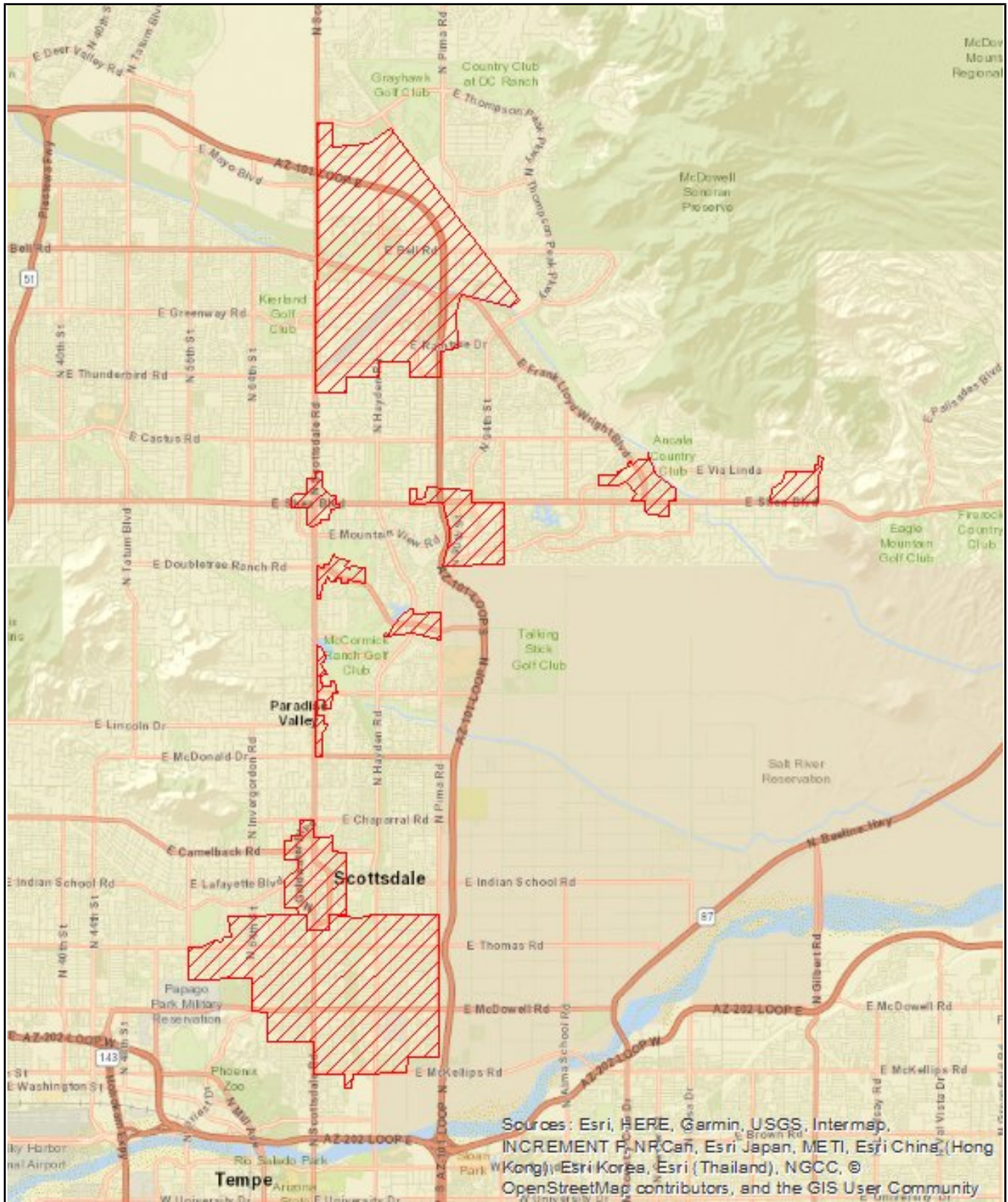


Sources: 2016 MAG Employer and Job Centers Database (Includes businesses with 5 or more employees)
 2016 Maricopa County TRP Survey (Includes businesses in Maricopa County with 50 or more employees)
 Numbers above 10 are rounded to the nearest 10

2016 Employment Report: Job Centers

| Job Center | Mapping ID | Businesses | Jobs |
|-------------------------------|------------|------------|--------|
| Scottsdale Airpark | SC_3 | 1,710 | 48,260 |
| Downtown Scottsdale | SC_1 | 820 | 22,050 |
| Shea/90th Job Center | SC_2 | 420 | 15,430 |
| McDowell Rd Job Center | SC_6 | 660 | 15,110 |
| Doubletree Job Center | SC_9 | 130 | 5,600 |
| Shea/Scottsdale Center | SC_12 | 240 | 3,520 |
| Via de Ventura Job Center | SC_7 | 180 | 3,470 |
| Scottsdale Rd Resort Corridor | SC_10 | 140 | 2,700 |
| East Shea Job Center | SC_8 | 9 | 2,140 |
| Shea/FLW Job Center | SC_4 | 90 | 1,460 |

2016 Employment Report: Job Centers

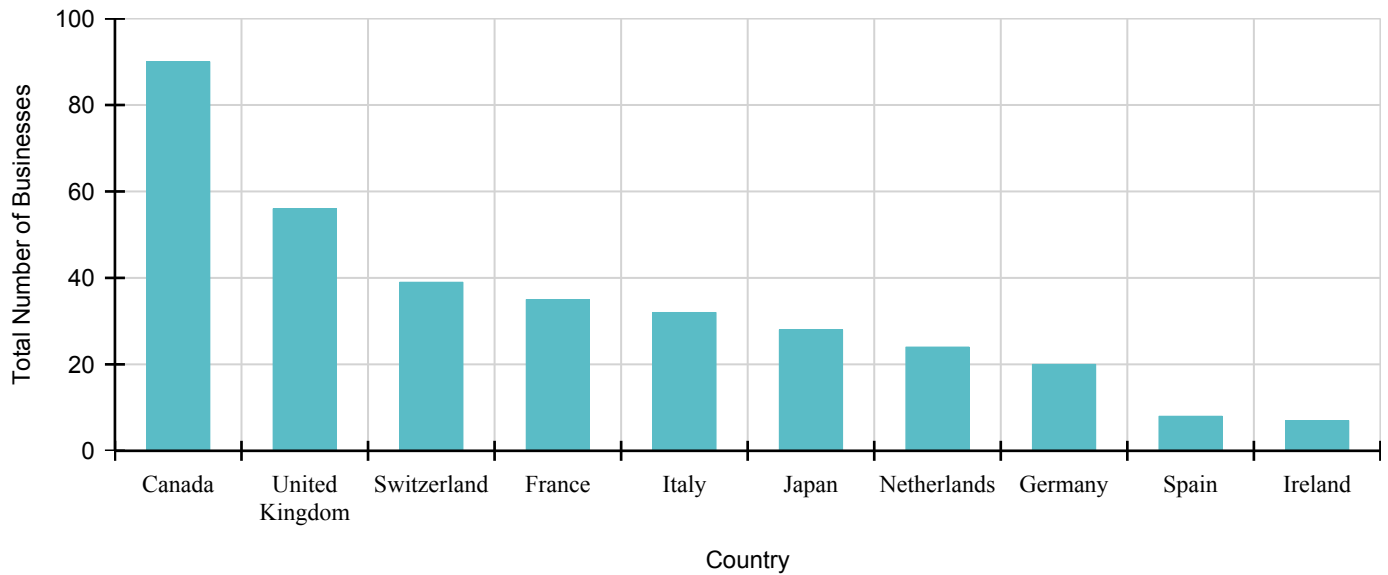


Sources: 2016 MAG Employer and Job Centers Database (Includes businesses with 5 or more employees)
 2016 Maricopa County TRP Survey (Includes businesses in Maricopa County with 50 or more employees)
 Numbers above 10 are rounded to the nearest 10

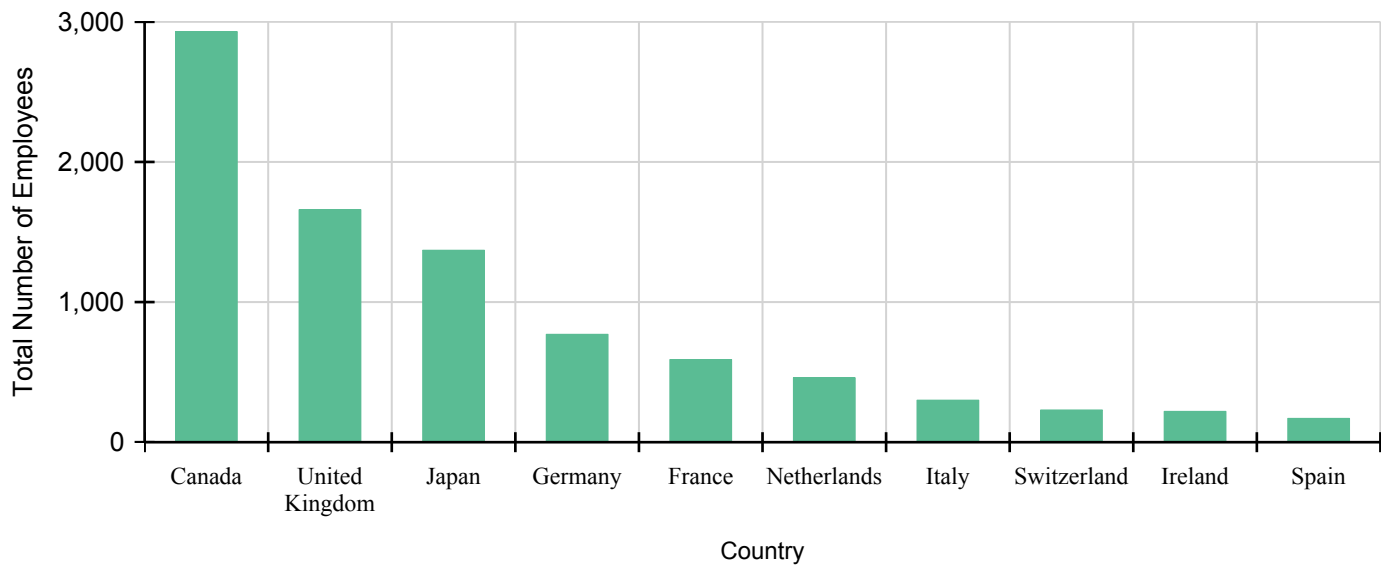
2016 Employment Report: Internationally Owned Businesses

| Country | Businesses | Employees |
|----------------|------------|-----------|
| Canada | 90 | 2,930 |
| United Kingdom | 56 | 1,660 |
| Japan | 28 | 1,370 |
| Germany | 20 | 770 |
| France | 35 | 590 |
| Netherlands | 24 | 460 |
| Italy | 32 | 300 |
| Switzerland | 39 | 230 |
| Ireland | 7 | 220 |
| Spain | 8 | 170 |

Number of Total Businesses by Country



Number of Total Employees by Country



2016 Employment Report: Employer List

Top 50 employers (Min 25 employees)

| Employer | Employee Count |
|--|----------------|
| General Dynamics C4 Systems Inc | 3,000 |
| Cvs Pharmacy Inc | 2,800 |
| Vanguard | 2,500 |
| Honorhealth | 2,100 |
| Mayo Clinic | 1,890 |
| Honorhealth | 1,810 |
| Nationwide Insurance | 1,580 |
| Quicken Loans | 1,400 |
| Yelpcom | 1,400 |
| Mckesson Corporation | 1,350 |
| Go Daddy Software Inc | 880 |
| International Cruise Excursions Inc | 850 |
| The Fairmont Scottsdale Princess | 700 |
| Early Warning Services Llc | 700 |
| Desert Mountain Properties | 620 |
| Vanguard | 580 |
| Nordstrom | 560 |
| Cvs Pharmacy Inc | 550 |
| Discount Tire Co Inc | 540 |
| Aetna Medicaid Business Unit | 530 |
| Hyatt Hotels Corporation | 500 |
| Honorhealth | 480 |
| The Boulders Resort Golden Door Spa | 470 |
| Four Seasons Resort Scottsdale Troon North | 410 |
| Henkel Consumer Goods | 410 |
| Blood Systems | 400 |
| Rummel Construction Inc | 370 |
| Walmart | 370 |
| St Jude Medical | 360 |
| Taser International Inc | 350 |
| Dolce Salon Spa Llc | 350 |
| Paypal Inc | 350 |
| Jda Software Inc | 350 |
| Cave Creek Unified School District 93 | 340 |
| Natural Data Inc | 330 |
| North Central University | 330 |
| Costco Wholesale | 310 |
| Srp | 310 |
| Matrix Medical Network | 310 |
| Moog Inc | 300 |
| Standard Aero Holdings Inc | 300 |
| Fender Musical Instruments Corp | 300 |
| Ames Construction Inc | 300 |
| Loan Depot | 290 |
| Paddock Pool Construction Co | 280 |
| Cvs Pharmacy Inc | 270 |
| City Of Scottsdale | 270 |
| Cna National Warranty Corporation | 270 |
| Scottsdale Resort Conference Center | 260 |
| City Of Scottsdale | 260 |

2016 Employment Report: International Employer List

Top 50 employers (Min 25 employees)

| Employer | Country | Employee Count |
|--|-------------------|----------------|
| The Fairmont Scottsdale Princess | Canada | 700 |
| Four Seasons Resort Scottsdale Troon North | Canada | 410 |
| Henkel Consumer Goods | Germany | 410 |
| Sap America Inc | Germany | 250 |
| Henkel Consumer Goods Inc | Germany | 200 |
| Brookfield Equinox Llc | Canada | 200 |
| Fire Sky Resort Spa | United Kingdom | 190 |
| Neiman Marcus | Canada | 190 |
| Marriott | Italy | 170 |
| Ticketmaster | United Kingdom | 160 |
| American Reliable Insurance Co | Ireland | 150 |
| Orion Health | New Zealand | 150 |
| Marriott | Italy | 130 |
| Pinnacle Nissan Infiniti | Japan | 130 |
| Hilton | United Kingdom | 130 |
| Holiday Inn | United Kingdom | 130 |
| Sagicor Life Insurance Co | Barbados | 110 |
| Gaylord Sports Management | France | 100 |
| Firetrace Usa Llc | United Kingdom | 100 |
| Hypertec Usa Inc | Canada | 100 |
| Equity Residential | Canada | 100 |
| Trader Joes Co | Germany | 90 |
| Swiftpage Inc | United Kingdom | 90 |
| Kyocera Solar Inc | Japan | 80 |
| Four Peaks Brewing Co Inc | Belgium | 80 |
| Marriott | Italy | 80 |
| Marriott | Italy | 80 |
| Fitch | United Kingdom | 70 |
| First Service Residential | Canada | 70 |
| Rossmar Graham | Canada | 70 |
| Randstad Technologies | Netherlands | 70 |
| Marriott | Italy | 70 |
| Hemisphere Gnss | Canada | 60 |
| Marriott | Italy | 60 |
| Opta Systems Llc | China | 60 |
| Trader Joes Co | Germany | 60 |
| Compass Bank | Spain | 60 |
| Piedmont Hawthorne Aviation Llc | United Kingdom | 60 |
| Mimis Cafe | France | 60 |
| Holiday Inn | United Kingdom | 60 |
| Pegasus Solutions | United Kingdom | 60 |
| Hyundai America Shipping Agency Inc | Republic Of Korea | 50 |
| Signature Flight Support | Canada | 50 |
| Saintgobain Abrasives | France | 50 |
| Nkk Switches Of America Inc | Japan | 50 |
| Sogeti Usa Llc | France | 50 |
| Computer Guidance Corporation | Canada | 50 |
| Catlin Inc | Ireland | 50 |
| Ubs Financial Services Inc Scottsdale | Switzerland | 50 |
| Mesa Underwriters Specialty Insurance | Bermuda | 50 |

Legal Disclaimer

The Maricopa Association of Governments (MAG) provides the data within these pages as a public resource of general information for use "as is". The Maricopa Association of Governments GIS (Geographic Information System) departments provides this information with the understanding that it is not guaranteed to be accurate, correct or complete and any conclusions drawn from such information are the sole responsibility of the user. Further, the Maricopa Association of Governments GIS departments makes no warranty, representation or guaranty as to the content, sequence, accuracy, timeliness or completeness of any of the spatial or database information provided herein. While every effort has been made to ensure the content, sequence, accuracy, timeliness or completeness of materials presented within these pages, the Maricopa Association of Governments GIS Departments assumes no responsibility for errors or omissions, and explicitly disclaims any representations and warranties, including, without limitation, the implied warranties of merchantability and fitness for a particular purpose. The Maricopa Association of Governments GIS Departments shall assume no liability for:

Any errors, omissions, or inaccuracies in the information provided, regardless of how caused; or
Any decision made or action taken or not taken by viewer in reliance upon any information or data furnished hereunder.

Availability of the Maricopa Association of Governments Map Server is not guaranteed. Applications, servers, and network connections may be unavailable at any time for maintenance or unscheduled outages. Outages may be of long duration. Users are cautioned to create dependencies on these services for critical needs.

THE FOREGOING WARRANTY IS EXCLUSIVE AND IN LIEU OF ALL OTHER WARRANTIES OF MERCHANTABILITY, FITNESS FOR PARTICULAR PURPOSE AND/OR ANY OTHER TYPE WHETHER EXPRESSED OR IMPLIED. In no event shall The Maricopa Association of Governments become liable to users of these data, or any other party, for any loss or direct, indirect, special, incidental or consequential damages, including, but not limited to, time, money or goodwill, arising from the use or modification of the data.

To assist the Maricopa Association of Governments in the maintenance and/or correction of the data, users should provide the Maricopa Association of Governments GIS Departments with information concerning errors or discrepancies found in using the data. Please use the e-mail contact address at the bottom of the affected web page.

Please acknowledge the Maricopa Association of Governments GIS as the source when Map Server data is used in the preparation of reports, papers, publications, maps, or other products.

To provide comments or report problems please contact: [Jason Howard, GIS Program Manager](#)